

## **SAS Installation Guide – Cal Poly**

Notes:

- 1) You will need about 2.5 GB of space on your hard drive for SAS.
- 2) SAS will not install properly on Windows Vista and Windows XP Home (Basic and Premium) Editions. You also need at least service pack 2 for windows XP. Check your operating system by going to start – settings – control panel. Click on System and view the System information on the general tab.
- 3) This install takes a long time. Be sure that laptops are not running on battery. Close all applications that are open, do not work on your computer during installation.
- 4) Before starting the installation go to my webpage (<http://statweb.calpoly.edu/jdoi/web/classes/stat330/st330.htm>) and download the SAS license data file to somewhere you can remember (ex. the desktop) on your computer.

**IMPORTANT – Please disregard the “SAS92\_640688.txt” reference on Page 12 of this instruction set and only use the current license data file found on my website as listed above.**

- 5) Questions, issues? Take a screenshot of the problem (Alt+PrntScrn, paste to word) and email it to me: [jdoi@calpoly.edu](mailto:jdoi@calpoly.edu)
- 6) Consider asking SAS Tech support for assistance. Go to <http://support.sas.com/techsup/> click on the Submit a problem link (left side). Fill out the form as requested.

Company = Cal Poly San Luis Obispo

Site Number = 70023349

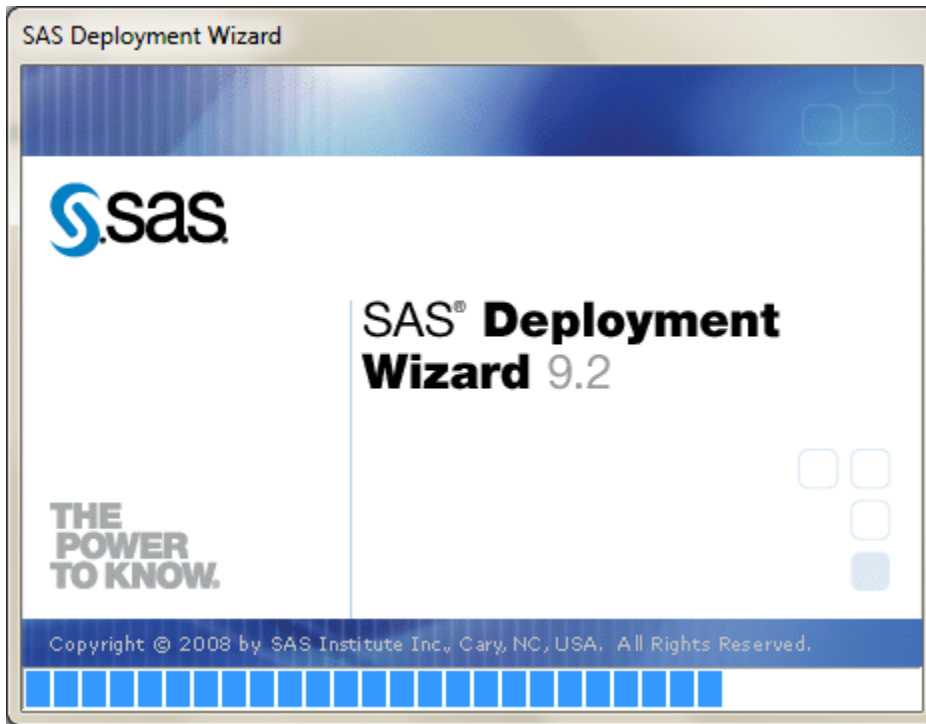
Product = Base SAS / SAS Foundation (this might be something else specific to your problem)

SAS Release = 9.2

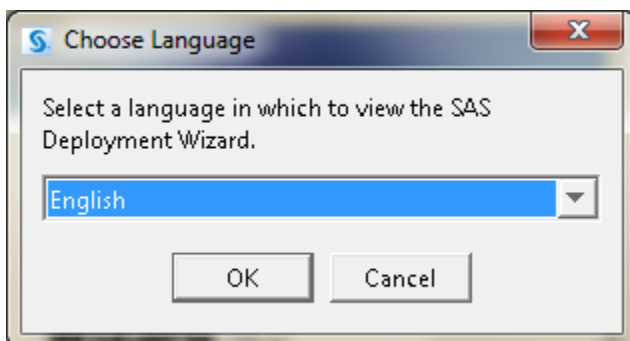
Insert DVD #1.

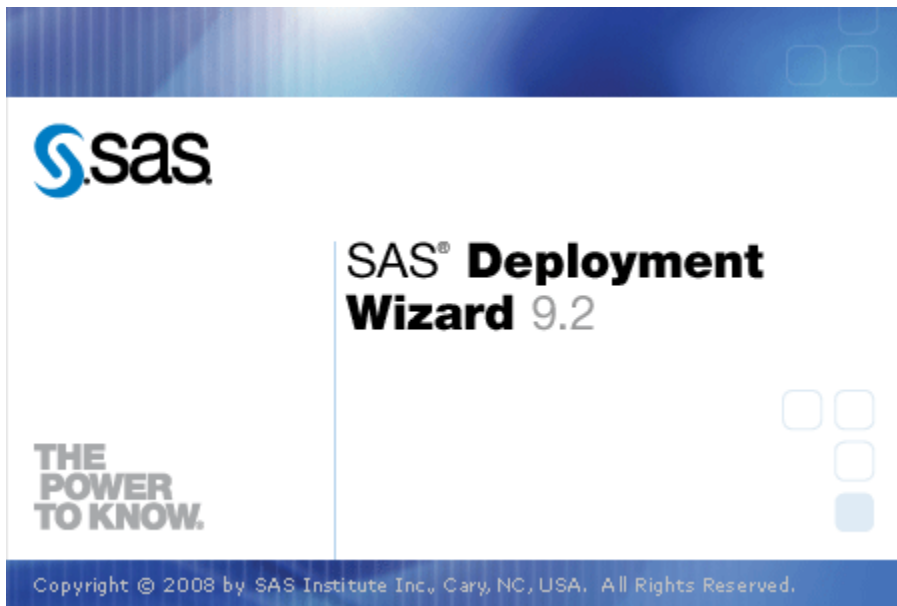
Choose Run setup.exe from auto launch OR open windows explorer to the CD drive and select run setup.exe

You should see:

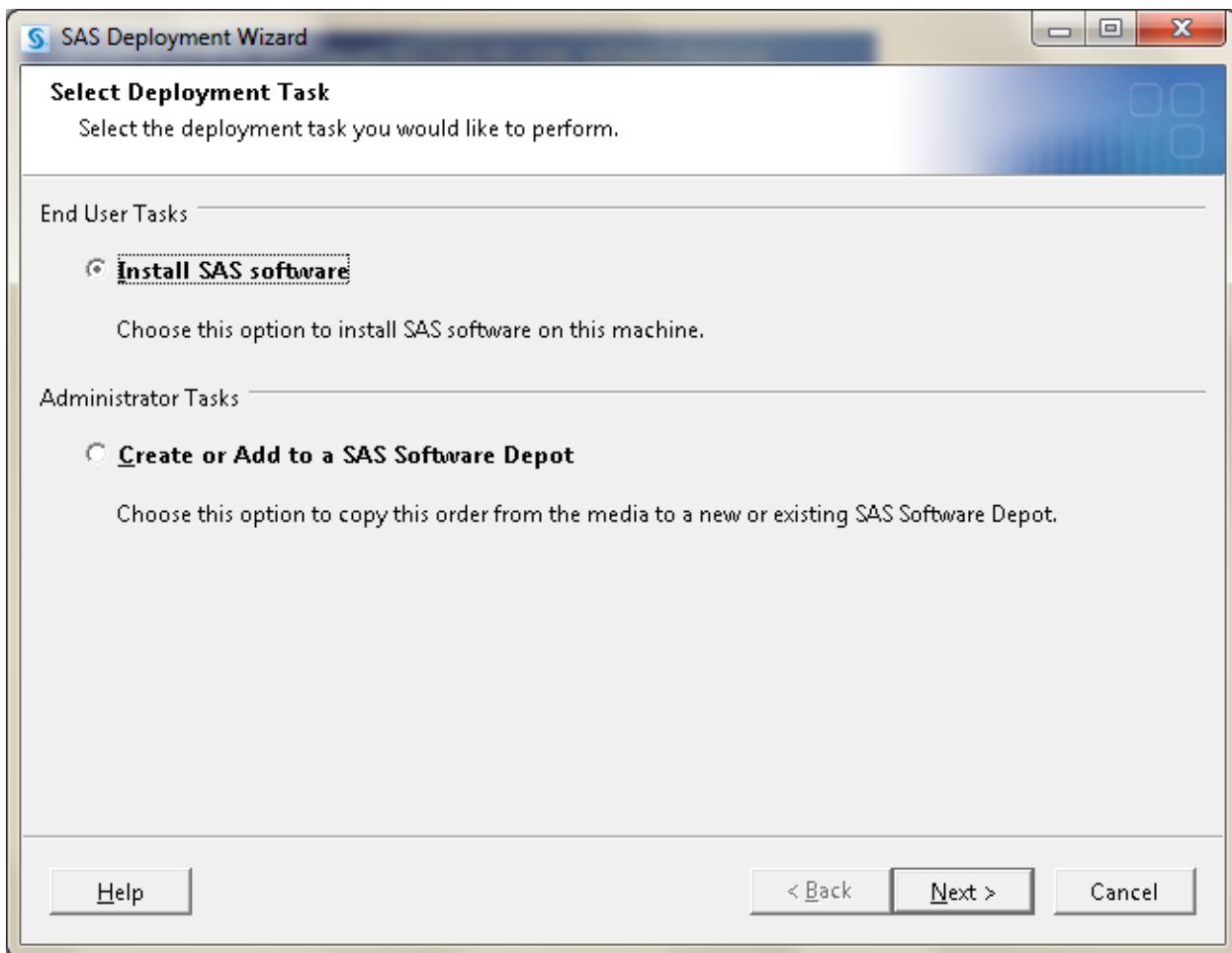


Choose default language (English), click ok.

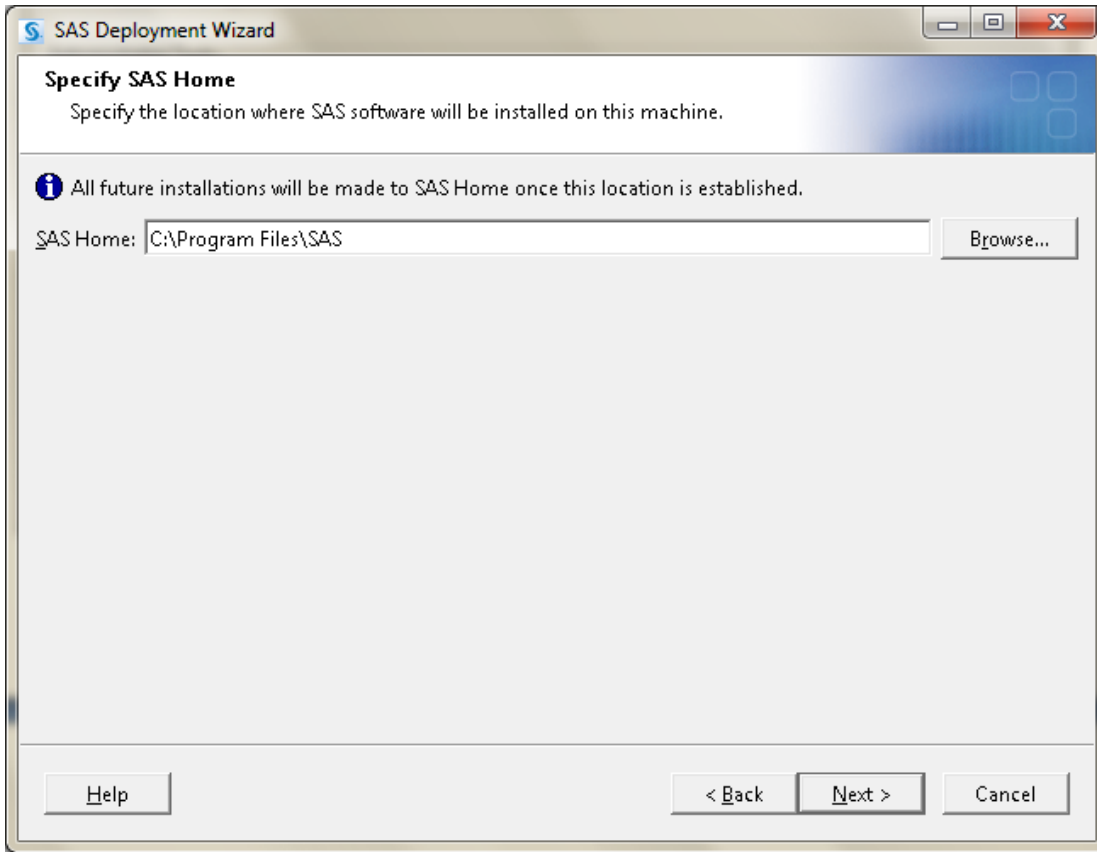




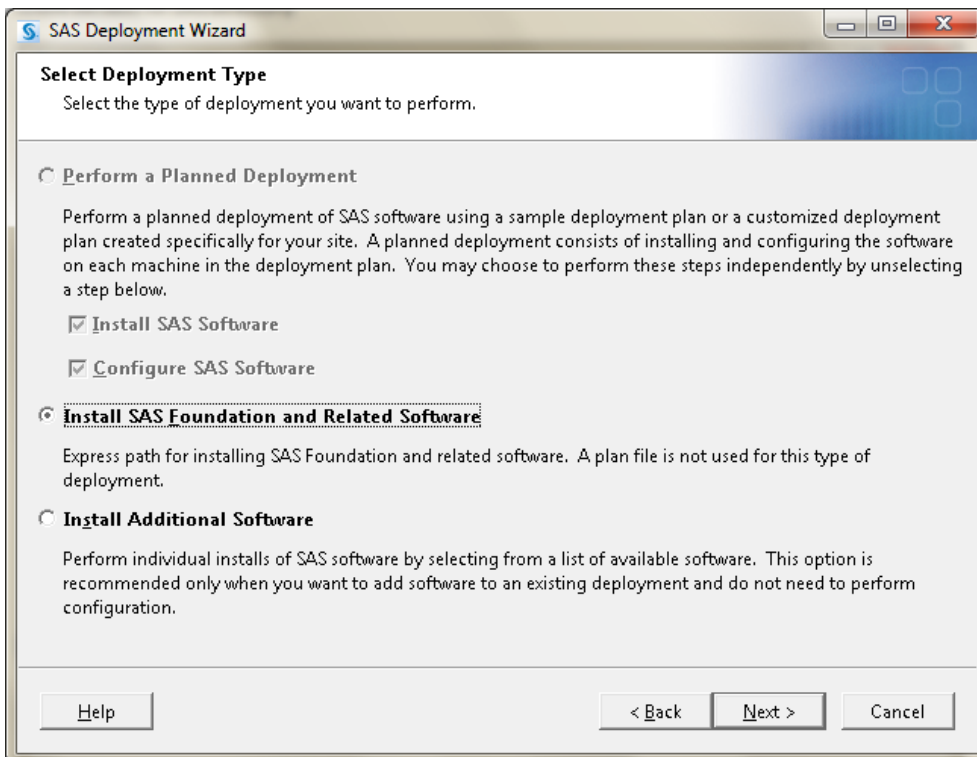
Choose Install SAS software



## Leave defaults for SAS directories



## Install SAS Foundation and Related Software



Be sure that the following components are selected (checked) for installation:

Report fonts for Clients

SAS Deployment Tester – Client

SAS Drivers for ODBC

SAS Enterprise Guide

SAS Foundation

SAS Integration Technologies Client (standalone product – click Help for more information)

SAS Online Doc for Windows

SAS Power and Sample Size

SAS Providers for OLE DB (standalone product – click Help for more information)

SAS Simulation Studio

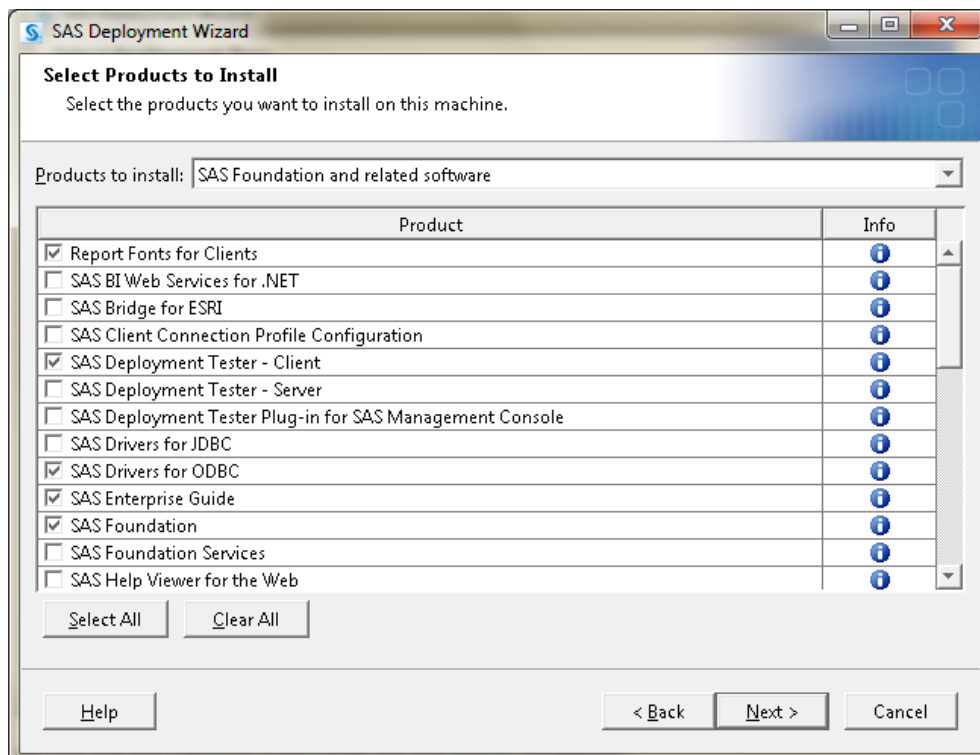
SAS XML Mapper

SAS/GRAPH ActiveX Control (standalone product – click Help for more information)

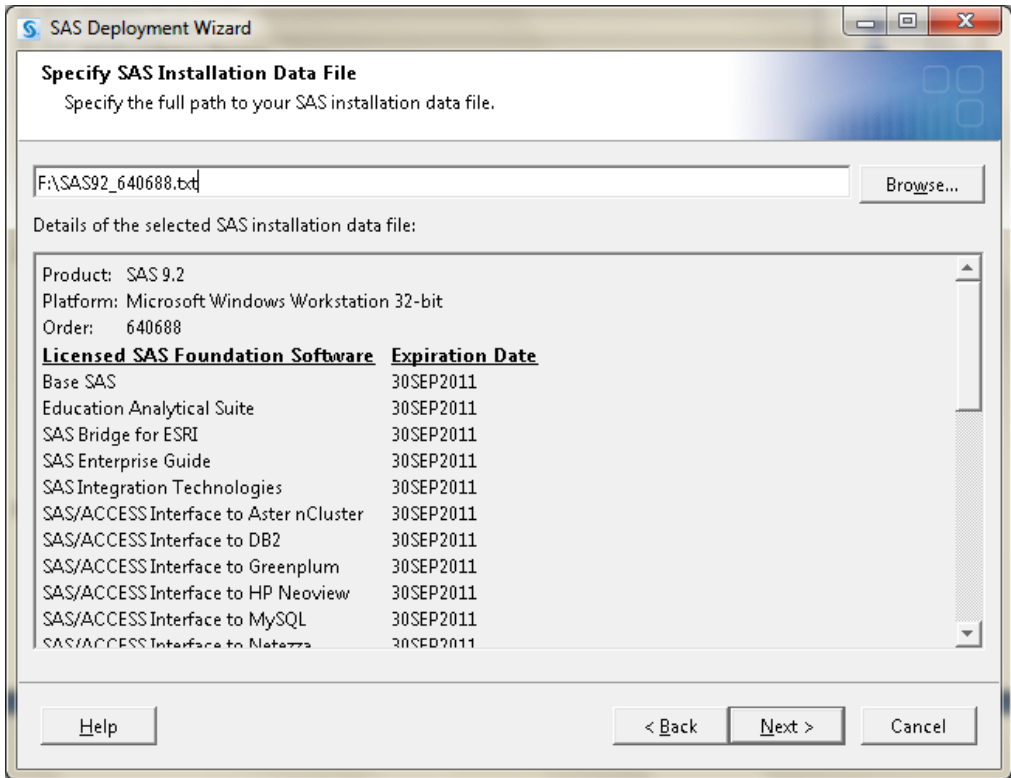
SAS/GRAPH ODS Graphics Editor

SAS/IML Studio

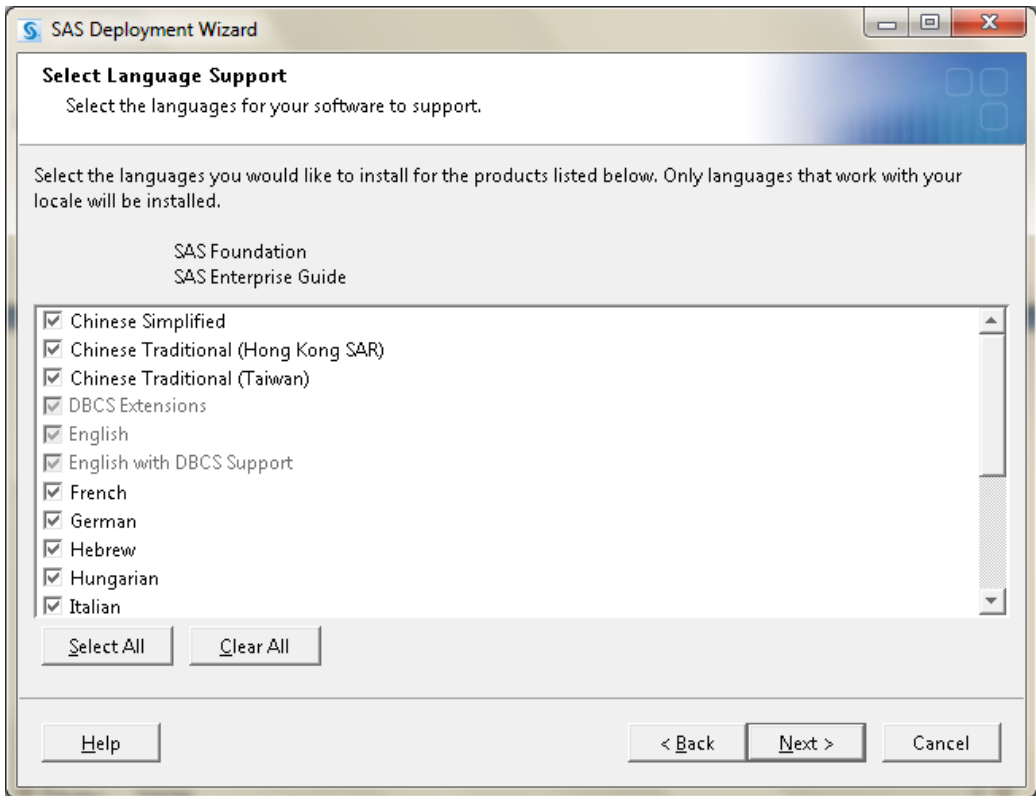
SAS/SECURE Windows Client Components



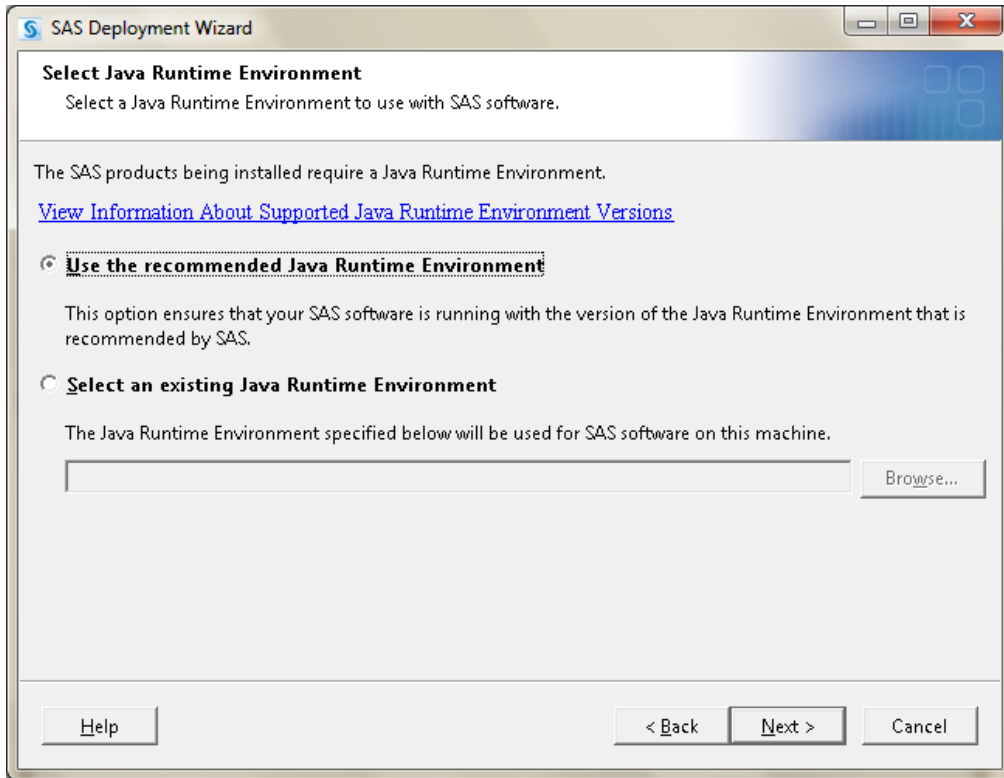
Redirect (Click Browse and find the file on your computer) the installation to the data file that you downloaded from my webpage (SAS92\_640688.txt)



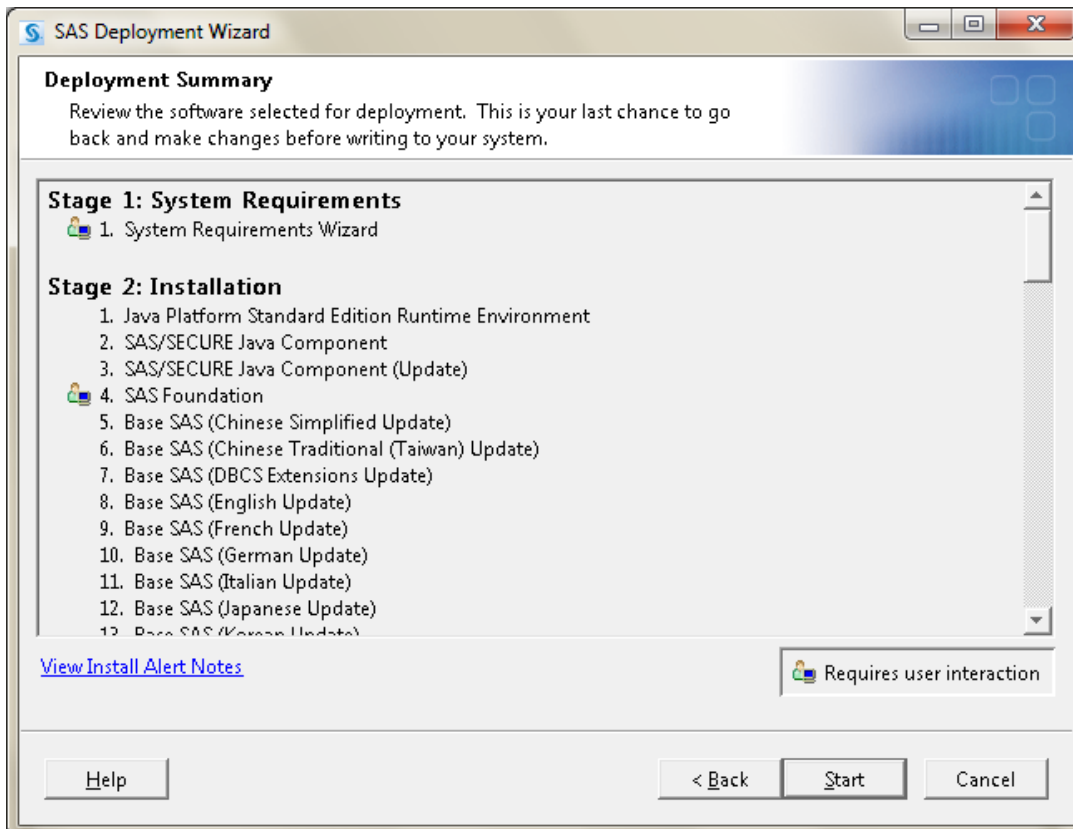
Leave the default language support. NOTE: You can unclick some of the foreign languages, but at the minimum leave DBCS extensions, English, English with DBCS support, and unicode support.



## Use the recommended JAVA runtime environment



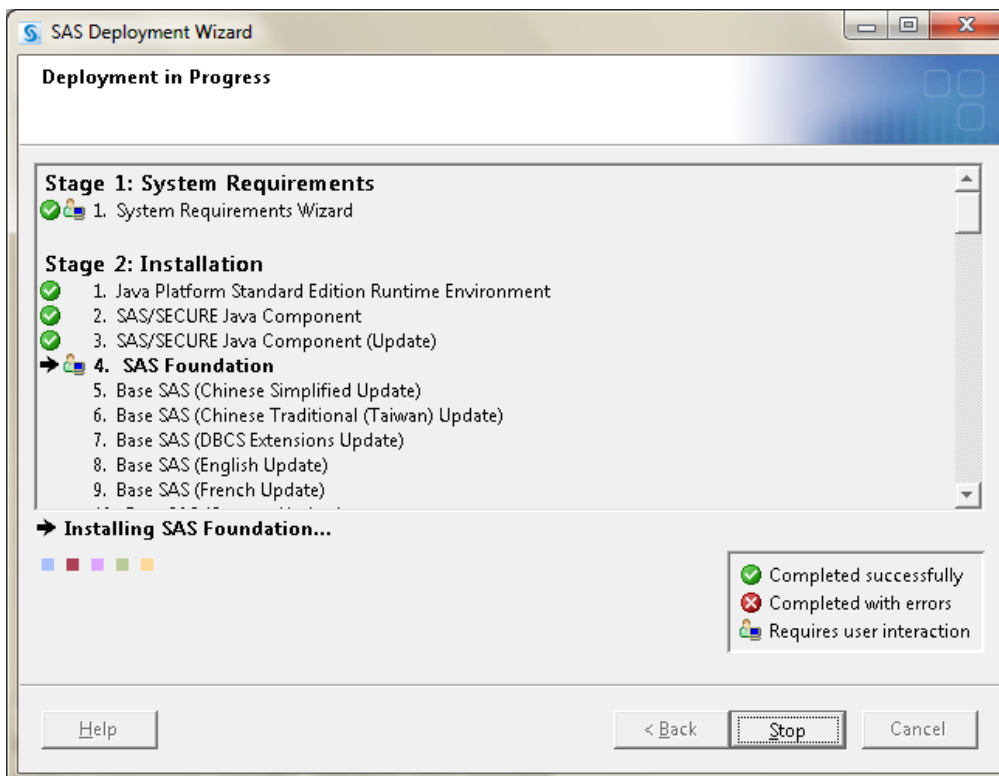
## Start the installation deployment



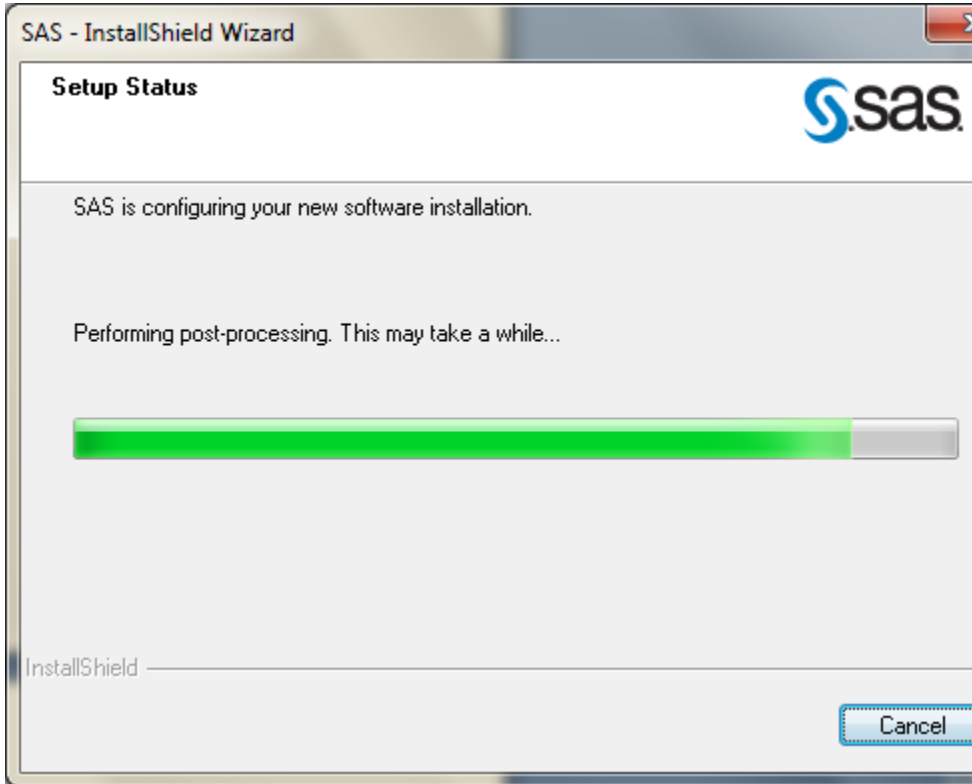
If asked, run the system requirements wizard. NOTE: this step will vary depending on your computer. Follow the wizard to install any recommended system components upgrades. Click finish when complete.



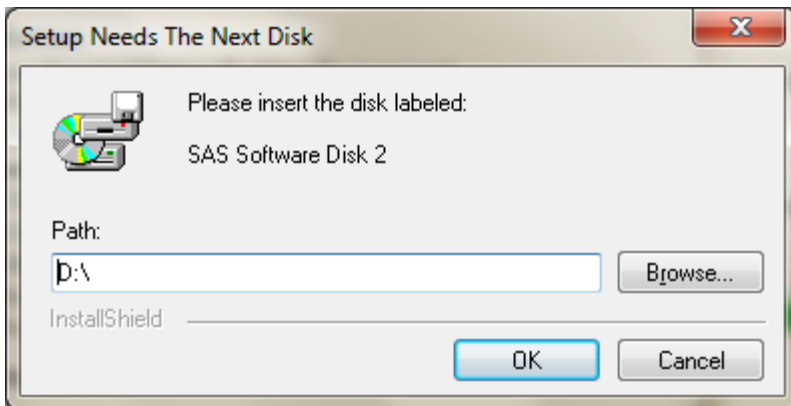
Complete stage 2: Installation. NOTE: Some of these steps (ex. Stage 2 step 4 (SAS Foundation) take a while) don't panic.



NOTE: There might be a setup status window running off to the side. This is ok.



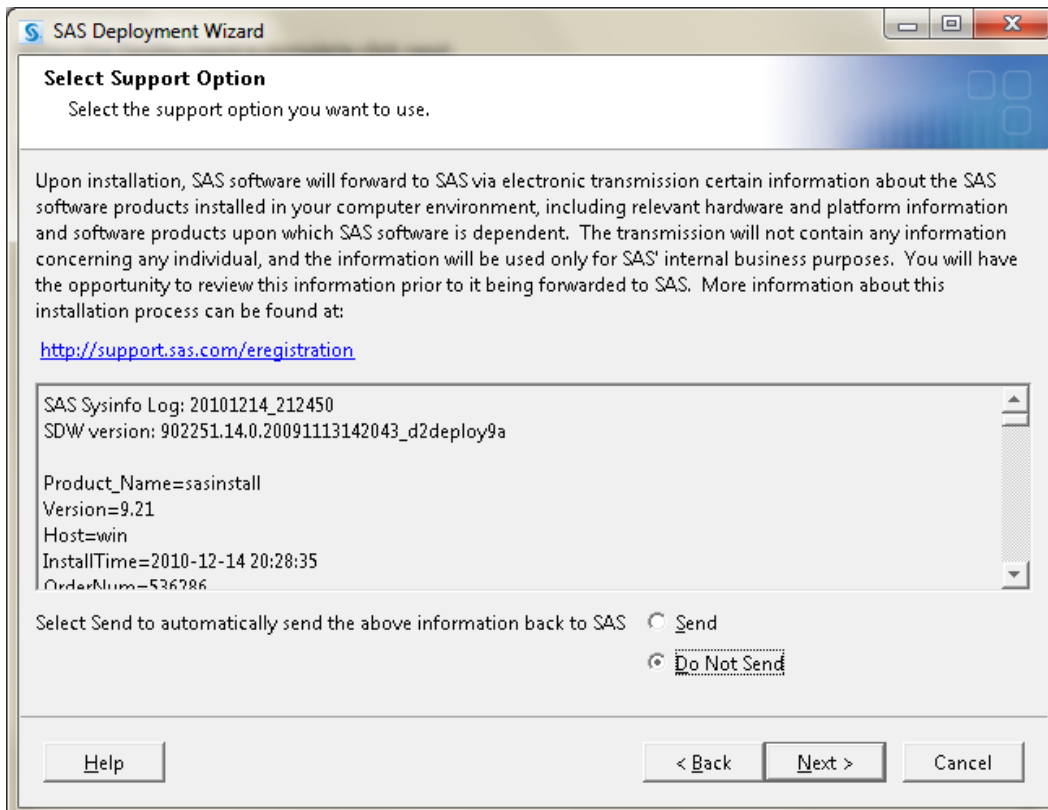
At some point your computer will ask for the second DVD. Load it up and click ok. NOTE: Ignore (ie. X out of) any autoplay windows. Install might go back and forth from DVD 2 to 1, etc... just follow it's lead and click ok. Continue to ignore (X out of) any autoplay windows.



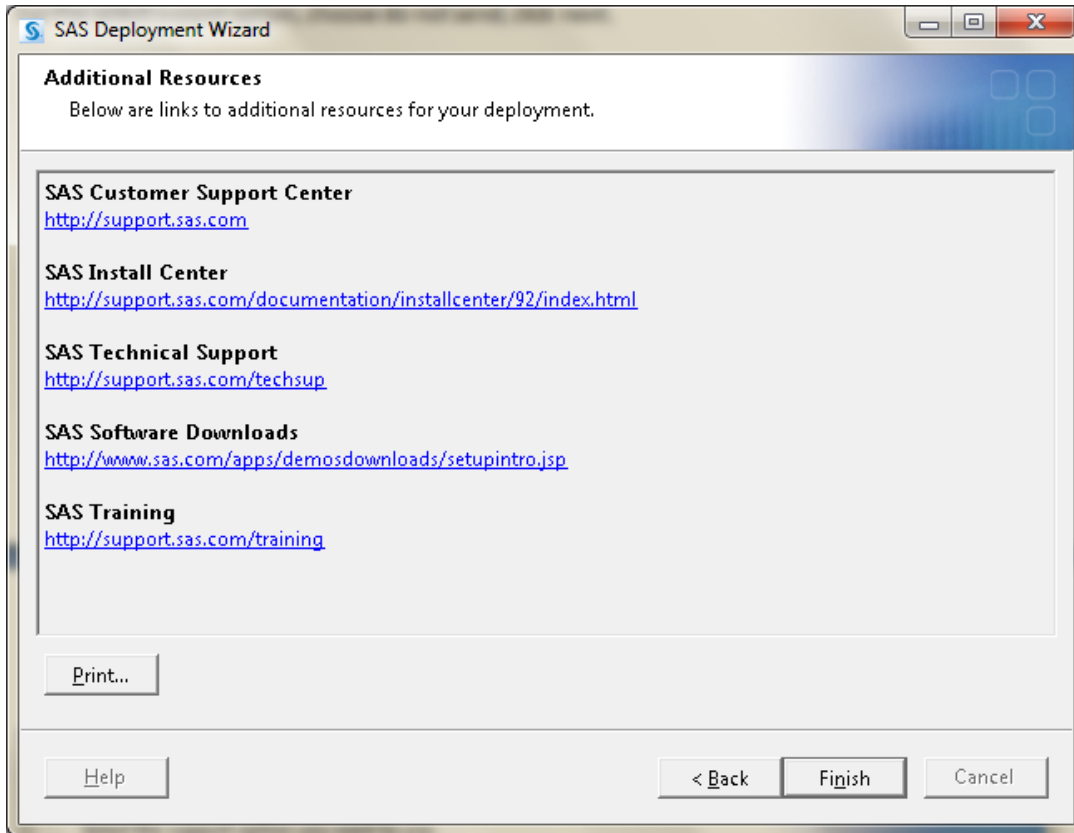
When the Deployment is complete click next.



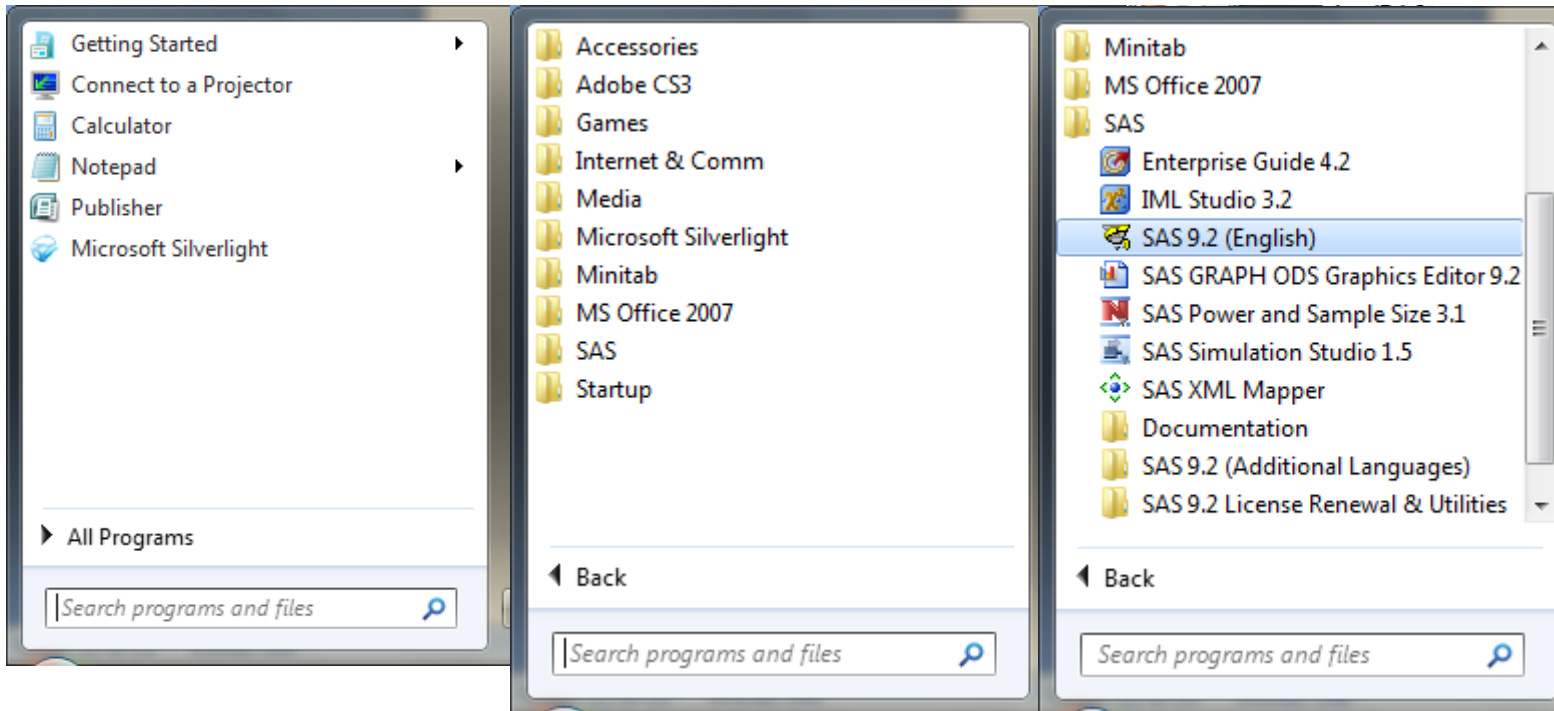
For the select support option, choose do not send, click next.



Click Finish.



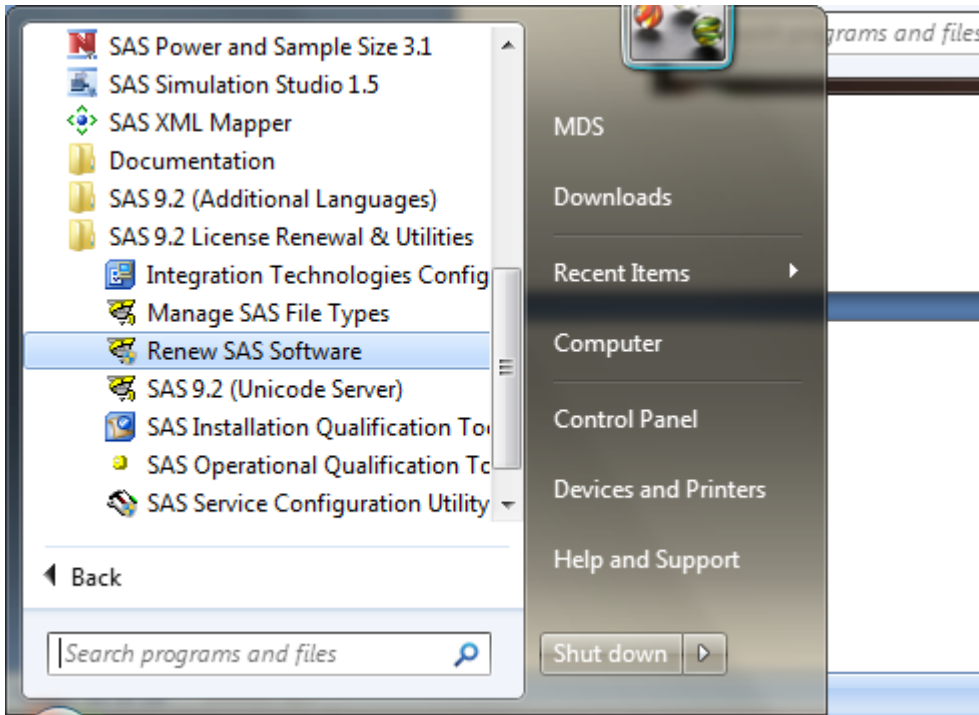
Eject any DVDs, and be sure that SAS will launch. To verify that SAS is launch properly, go to All programs – SAS – SAS 9.2 (English)



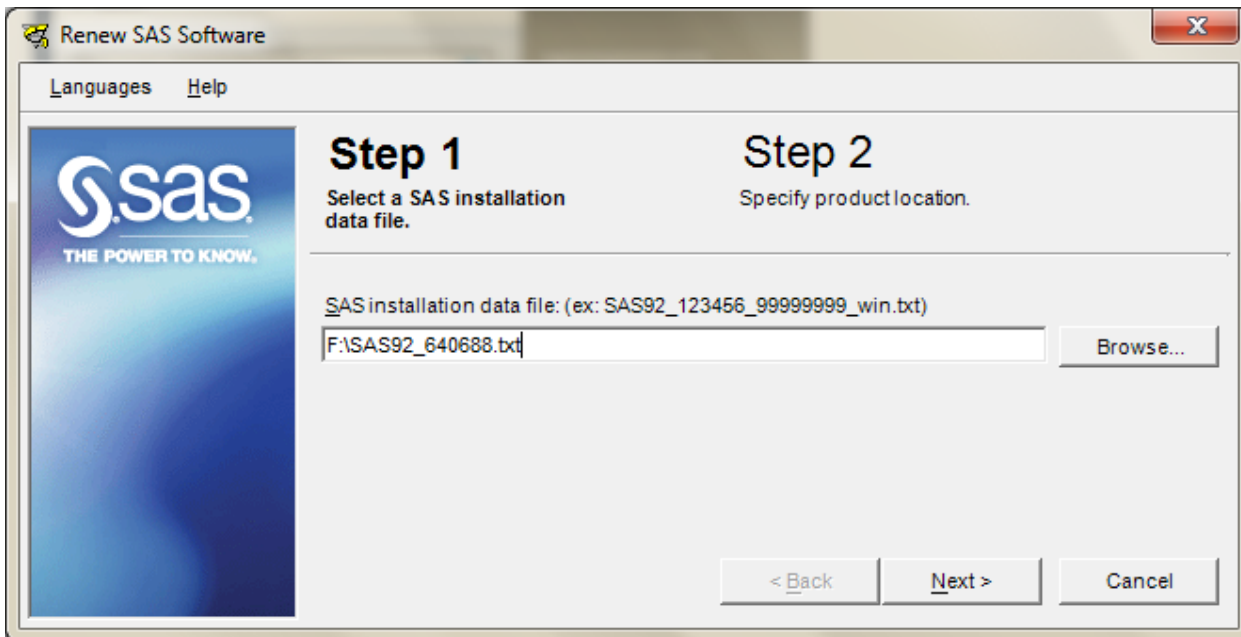
At this point SAS should launch successfully, if so then you are done.

However, if SAS shows a warning because it has expired.

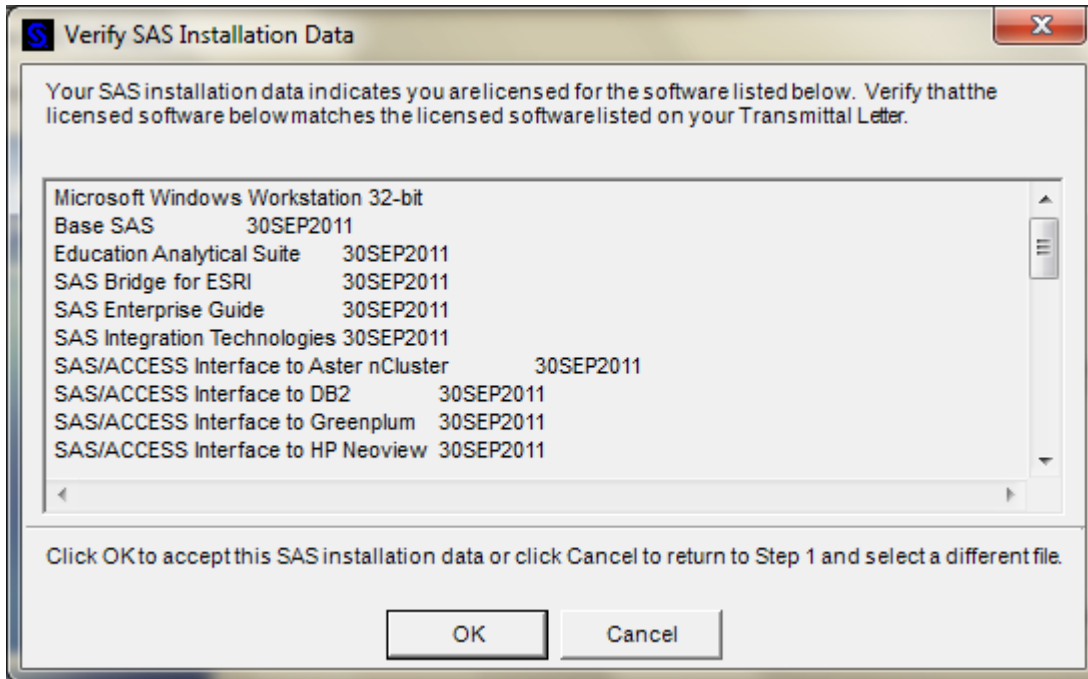
Go to All programs – SAS – SAS 9.2 License Renewal & Utilities – Renew SAS Software



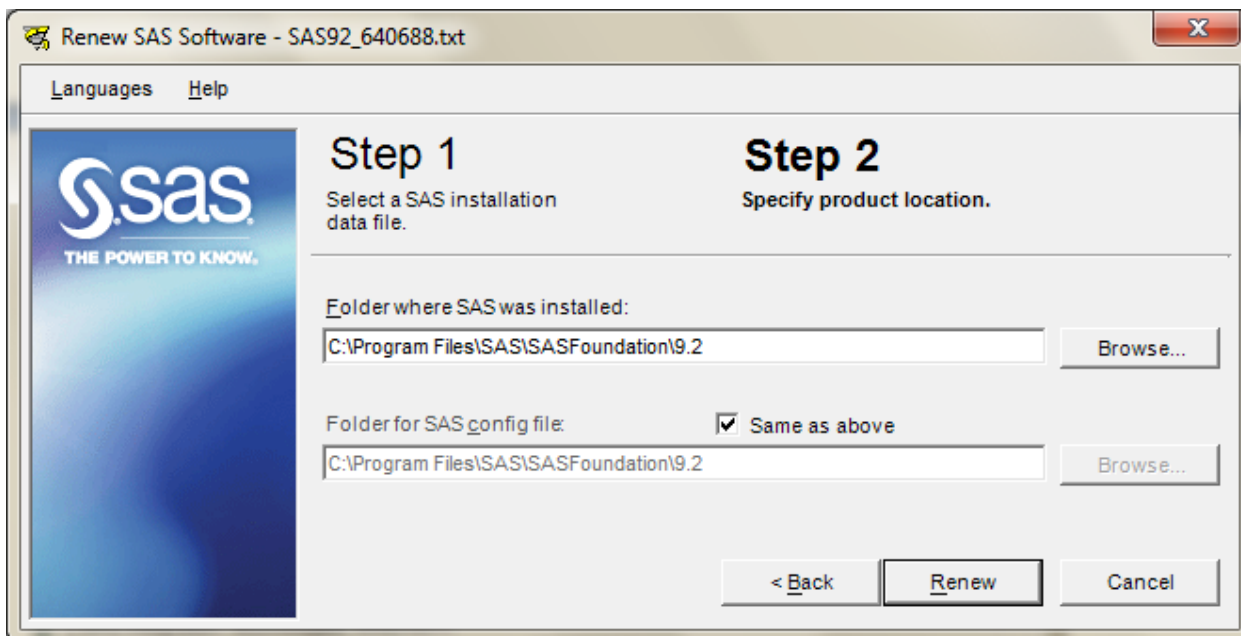
Find the license file that you downloaded from my website (SAS92\_640688.txt). Click next.



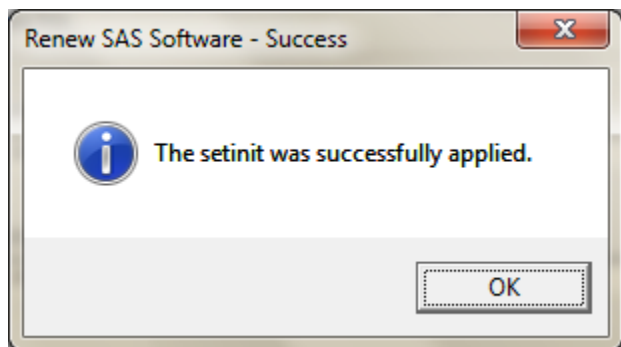
Click ok to accept the SAS installation data



Leave the default folders where SAS was installed. Click renew.



If successful you should see that the setinit was applied. Click ok.



Once again launch SAS and be sure that it is loading properly with no warning messages. Go to All programs – SAS – SAS 9.2 (English)